



NBK Polyclonal Antibody

Catalog No	YP-Ab-00459
Isotype	IgG
Reactivity	Human;Rat;Mouse;
Applications	WB;IHC;IF;ELISA
Gene Name	BIK
Protein Name	Bcl-2-interacting killer
Immunogen	The antiserum was produced against synthesized peptide derived from human BIK. AA range:18-67
Specificity	NBK Polyclonal Antibody detects endogenous levels of NBK protein.
Formulation	Liquid in PBS containing 50% glycerol, 0.5% BSA and 0.02% sodium azide.
Source	Polyclonal, Rabbit,IgG
Purification	The antibody was affinity-purified from rabbit antiserum by affinity-chromatography using epitope-specific immunogen.
Dilution	Western Blot: 1/500 - 1/2000. Immunohistochemistry: 1/100 - 1/300. Immunofluorescence: 1/200 - 1/1000. ELISA: 1/10000. Not yet tested in other applications.
Concentration	1 mg/ml
Purity	≥90%
Storage Stability	-20°C/1 year
Synonyms	BIK; NBK; Bcl-2-interacting killer; Apoptosis inducer NBK; BIP1; BP4
Observed Band	30 25kD
Cell Pathway	Endomembrane system; Single-pass membrane protein. Mitochondrion membrane ; Single-pass membrane protein . Around the nuclear envelope, and in cytoplasmic membranes.
Tissue Specificity	B-cell,Lymph,Lymphoid,
Function	domain:Intact BH3 motif is required by BIK, BID, BAK, BAD and BAX for their pro-apoptotic activity and for their interaction with anti-apoptotic members of the Bcl-2 family.,function:Accelerates programmed cell death. Binding to the apoptosis repressors Bcl-X(L), BHRF1, Bcl-2 or its adenovirus homolog E1B 19k protein suppresses this death-promoting activity. Does not interact with BAX.,subcellular location:Around the nuclear envelope, and in cytoplasmic membranes.,
Background	The protein encoded by this gene shares a critical BH3 domain with other death-promoting proteins, such as BID, BAK, BAD and BAX, that is required for its pro-apoptotic activity, and for interaction with anti-apoptotic members of the BCL2 family, and viral survival-promoting proteins. Since the activity of this protein is suppressed in the presence of survival-promoting proteins, it is suggested as a



likely target for anti-apoptotic proteins. [provided by RefSeq, Sep 2011],

matters needing attention

Avoid repeated freezing and thawing!

Usage suggestions

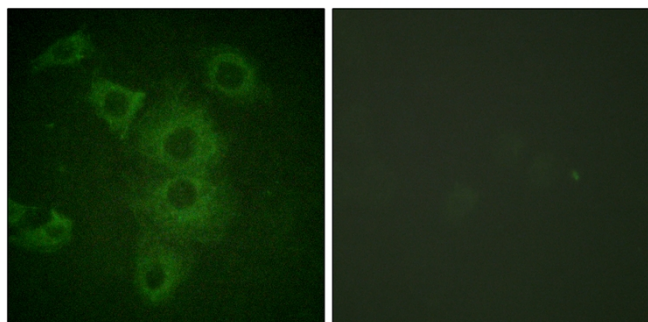
This product can be used in immunological reaction related experiments. For more information, please consult technical personnel.



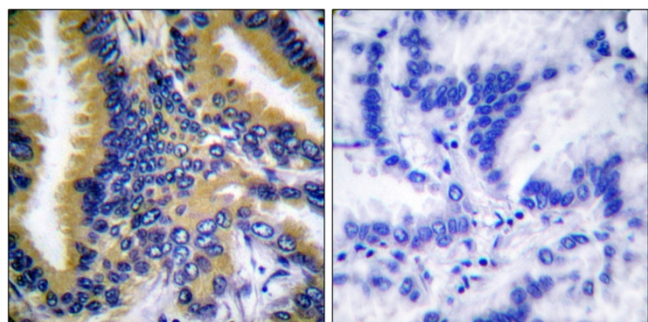
Products Images



Western Blot analysis of various cells using NBK Polyclonal Antibody diluted at 1:500



Immunofluorescence analysis of HUVEC cells, using BIK Antibody. The picture on the right is blocked with the synthesized peptide.



Immunohistochemistry analysis of paraffin-embedded human lung carcinoma tissue, using BIK Antibody. The picture on the right is blocked with the synthesized peptide.



HUVEC COLO 205 HUVEC

Western blot analysis of lysates from HUVEC/COLO205, using BIK Antibody. The lane on the right is blocked with the synthesized peptide.

